

FlexProcess and Planning and Scheduling

For a changing business environment and customer service

The planning and scheduling for process manufacturers is an essential part of the supply chain. The business environment in recent times has shifted from manufacturing to customer relationship management, and to the internet and collaborative commerce. The customer service expectations have increased; and customers now expect their suppliers to deliver their goods, some even custom made, in a very short lead-time!

The planning and scheduling challenge is to respond to these increased customer service requirements, taking the complexity and variability of the resources and the manufacturing plant in the process industry into consideration. Good planning and scheduling also have an immediate impact on production utilization, optimal production batches with minimal changeovers and on optimal purchasing cycles and inventory levels. The potential savings in working capital and inventory costs can be significant. Do you have the planning and scheduling applications for an agile and efficient process manufacturing plant?

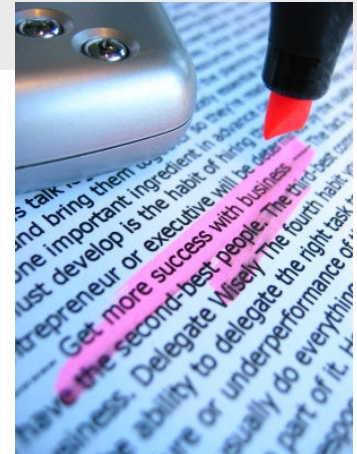
FlexProcess from NEC Corporation is a complete ERP solution with unique concepts, functions and technology designed specifically for process manufacturers. Its functionality covers Process Modeling and Production Management, Planning and Scheduling, Inventory Management, Purchasing, Customer Order Management, Process Costing and Financials.

FlexProcess is Microsoft standard compliant and with open .Net application programming interfaces (API's), companies can seamlessly integrate it into their complete supply chain solution. Ideal for today's business world FlexProcess is also very flexible and its ability to change and be modified without making changes to the code means the application will continue to deliver greater value and a longer return on investment (ROI) through this future proofing technology,

Planning and Scheduling

FlexProcess Plant Planning and Scheduling are tightly integrated to ensure that any changes to planned or actual schedules are reflected in planning swiftly and accurately. This allows the planner to quickly respond to changes in business conditions and changing customer/market demands. FlexProcess Planning allows planners to accurately reflect capacity constraints up front, effective utilization of the available resources to produce the required product in the most efficient and profitable way. FlexProcess Planning gets its information from resources, production models, inventory, sites, forecasts and master schedules, expected shipments and expected receipts. Every analysis of your production plan, therefore, is based on accurate information. Plant Planning lets you define what you want to include in the planning run, such as generic resources, certain planning rules and lets you review the results of the run and make adjustments.

www.ObTechGlobal.com



Benefits of Plant Planning and Quick Scheduler:

- Provides accurate view of supply and demand relationships
- Increases Productivity
- Increases "response to change" times
- Improved competitiveness and profit margins
- Improved use of labor and energy
- Plans co-products, by-products, rework and recycles
- Plans characteristics, shelf life and seasonality
- Powerful graphical analysis tools



Planning Profiles allows you to specify exactly what database, resources, and sites you want to include in the planning run. The planning action board, Planning Pegging Inquiry, Planning Available to Promise (ATP), and Quick Scheduler are tools to allow you to examine the results of the run, make changes and implement a manufacturing plan that your plant can follow. Plant Planning can be paused during the run to consider the results at that point and respond to recommendations, perhaps making tactical capacity planning decisions after the finished goods level, and before intermediate levels are planned. In this way, the number of planning runs can be reduced and the planner is released to perform additional tasks.

Plant Planning Pegging

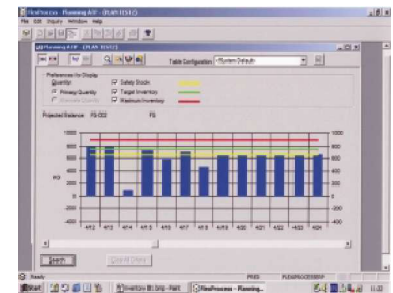
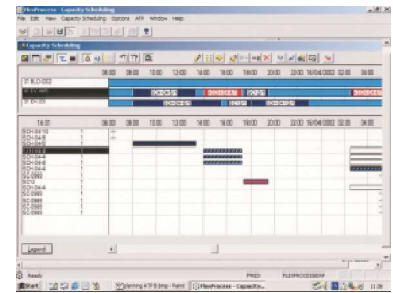
Pegging allows the planner to keep a check on the important supply/demand relationship that is critical in maintaining a smooth production flow. The planner can peg from the supply side and see all the demands that are affected by an interruption in the supply. Pegging from the demand side allows the planner to view the production status of an order and see the impact if the customer changes the order in any way.

Quick Scheduler

Using Quick Scheduler, the planner can quickly identify scheduling conflicts. Scheduling to the minute allows the planner to make adjustments to scheduled runs to make the most efficient use of the plant. Scheduling rules such as, light colors first, products containing nuts manufactured last and small boxes first can reduce the time taken to changeover or clean down lines and allows the plant to produce more products during a shift. Schedules can be split or linked on the same, or over different manufacturing lines. Labor and energy requirements can be defined, represented as a resource and subjected to analysis.

Available to Promise

Available to Promise allows the planner to view all schedules that produce or consume the selected resource. Quick Scheduler maintains the available-to-promise (ATP) inventory levels based on those schedules. When changes are made, Quick Scheduler immediately recalculates the ATP information and highlights any shortages caused by alteration to the schedules selected.



About the solution

NEC's FlexProcess is an ERP solution designed specifically for the process industries and helps you build an information system that streamlines business processes, reduces TCO (Total Cost of Ownership), and adapts to changing business environments.

No matter where you choose to take your organization, NEC's FlexProcess can adapt to your business and support your industry-specific goals and objectives. With its powerful object oriented technology, full support for .NET and a Business Intelligence Suite, the system can bring information together from any source and allow you to view it in the context of your industry.



ObTech Asia Pacific Headquarters
 22 Cross Street
 #03-54/61
 South Bridge Court
 Singapore, 048421
 Tel: +65.6227.7172 Fax: +65.6225.9210

ObTech Asia Pacific Sdn Bhd
 Suite 18.01 – 18.03
 18th Floor, Menara Keck Seng
 203, Jalan Bukit Bintang
 55100 Kuala Lumpur, Malaysia
 Tel: +60.3.2710.9341 Fax: +60.3.2710.9345

For More Information
 E-mail: info@obtechglobal.com
 Website: www.ObTechGlobal.com

Other Offices: Bangkok, Boston, Brussels, Cebu, Davao, Indonesia, Kuala Lumpur, Manila, Santa Clara, Tokyo